

Worldwide Network

● HEAD OFFICE / ENGINEERING CENTER

Makuhari Technical Center, 1-1 Nakase, Mihama-ku, Chiba-shi, Chiba 261-8601, Japan
Tel: 81-43-274-1000
URL <https://www.toyo-eng.com/jp/>

● TOKYO OFFICE

HIBIYA FORT TOWER, 16th Floor 1-1, Nishi Shimbashi 1-chome Minato-ku, Tokyo 105-0003, Japan
Tel: 81-3-3508-0111

Overseas Offices

● Jakarta

Wisma IKPT, 2nd Fl., JL. MT. Haryono Kav. 4-5, Jakarta 12830, Indonesia
Tel: 62-21-835-4170 Fax: 62-21-835-4149

● Moscow

Room No. 207, Entrance 7, World Trade Center, Krasnopresnenskaya Nab., 12, Moscow 123610, Russia
Tel: 7-495-258-2064/1504

Overseas Group Companies

■ Toyo Engineering Korea Limited

Toyo B/D. 11, Teheran-ro 37-gil, (Yeoksam-dong), Gangnam-gu, Seoul, 06142, Korea
Tel: 82-2-2189-1620 Fax: 82-2-2189-189 0
URL <https://www.toyoeng.com/kr/>
EPC for plants and facilities

■ Toyo Engineering Corporation (China)

7F, New Bund Oriental Plaza I, No.512 Haiyang West Road, Pudong New District, Shanghai, 200124, China
Tel: 86-21-6187-1270 Fax: 86-21-5888-8864/8874
URL <https://www.toyo-eng.com/cn/>
EPC for plants and facilities

■ PT. Inti Karya Persada Teknik (IKPT)

JL. MT. Haryono Kav. 4-5, Jakarta 128 30, Indonesia
Tel: 62-21-829-2177
Fax: 62-21-828-1444 /62-21-835-3091
URL <http://www.ikpt.com/>
EPC for plants and facilities

■ Toyo Engineering & Construction Sdn. Bhd.

Suite 25.4, 25th Fl., Menara Haw Par, Jalan Sultan Ismail, 50250 Kuala Lumpur, Malaysia
Tel: 60-3-2731-1100 Fax: 60-3-2731-1110
URL <https://www.toyoeng.com/my/>
EPC for plants and facilities

■ Toyo Engineering India Private Limited

"Toyo Technology Centrè, 71, Kanjur Village Road, Kanjurmarg(East), Mumbai-400 042, India
Tel: 91-22-2573-5000 Fax: 91-22-2573-5842
URL <https://www.toyoeng.com/in/>
EPC for plants and facilities

■ Toyo Engineering Europe, S. r.l.

10 Via Alzata, 24030 Villa d'Adda, Bergamo, Italy
Tel: 39-035-4390520
Procurement services in Europe

■ Toyo U.S.A., Inc.

16225 Park Ten Place, Suite 300, Houston, Texas 77084, U.S.A.
Tel: 1-281-579-8900 Fax: 1-281-599-9337
EPC for plants and facilities

■ TS Participa ções e Investimentos S.A.

Rua Arizona 491 -18º andar, Cj 181, Cidade Monções, 04567-001 São, Paulo, SP, Brasil
URL <https://www.toyosetal.com/>
EPC for plants and facilities, and offshore modules fabrication & integration

■ Offshore Frontier Solutions Pte. Ltd.

9 North Buona Vista Drive, #21-01 The Metropolis Tower 1, Singapore 138588
Tel: 65-6496-4000 Fax: 65-6496-4191
Engineering, Procurement, Construction and Installation for FPSO

■ TOYO MODEC OFS India Private Limited

Godrej Centre Indiranagar 7th Floor, PID No. 85-79-1-15, Ward No. 79, Municipal No. 1-15, BM Kaval, Old Madras Road, Bangalore, Karataka-560038, India
Global Capability Center to execute FEED, Detailed Engineering and to provide Procurement Support for the Topsides of FPSO projects.

Domestic Group Companies

■ TEC Project Services Corporation

Makuhari Technical Center, 1-1 Nakase, Mihama-ku, Chiba-shi, Chiba 261-8602, Japan
Tel: 81-43-272-5508
URL <https://tec-tps.com/>
EPC and maintenance services for plants and facilities, environmental technology

■ TEC Business Services Corporation

Makuhari Technical Center, 1-1 Nakase, Mihama-ku, Chiba-shi, Chiba 261-8603, Japan
Tel: 81-43-331-2290 Fax: 81-43-272-6155
URL <https://www.tbiz.co.jp/english/>
Staffing service, contracted business service, translation and interpretation service, facility management service

■ TEC Air Service Corporation

2-6-7 Ginza, Chuo-ku, Tokyo 104-0061, Japan
Tel: 81-3-3564-0130 Fax: 81-3-3564-0203
URL <https://www.tec-air.co.jp/>
Travel and insurance services

■ TEC Accounting & Consulting Ltd.

Makuhari Technical Center, 1-1 Nakase, Mihama-ku, Chiba-shi, Chiba 261-8603, Japan
Tel: 81-50-1735-3759 fax: 81-43-272-7555
URL <https://www.ta-c.co.jp/english/>
Business support and consulting for accounting and accountingsystem development

■ Chiba Data Center Corporation

6-5-3 Tendai, Inage-ku, Chiba-shi, Chiba 263-0016, Japan
Tel: 81-43-284-3611 Fax: 81-43-284-3533
URL <https://www.chiba-data.co.jp/>
Data entry, scanning services and commercial printing
*EPC : Engineering, Procurement and Construction
*FPSO: Floating Production, Storage and Offloading system



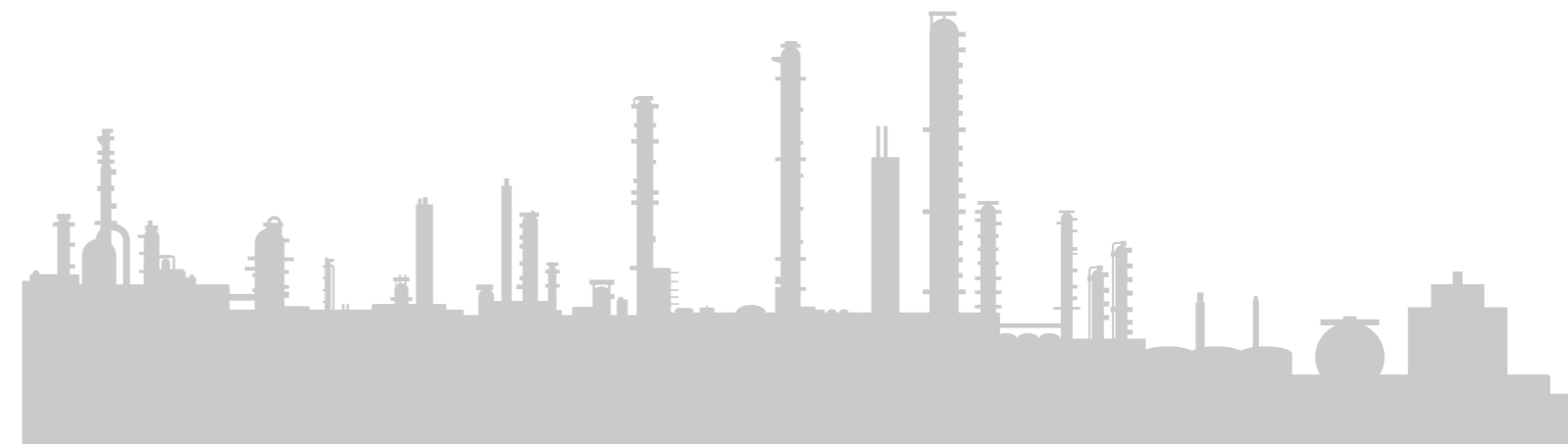
TOYO ENGINEERING CORPORATION INFORMATION



(As of June 1, 2026)

©Toyo Engineering Corp.

Printed in Japan



Corporate Data



Eiji Hosoi
President and CEO

Corporate Name: Toyo Engineering Corporation (TOYO)
 Founded: May 1, 1961
 Number of Employees: 6,229
 (including consolidated companies; current as of March 31, 2025)
 Paid-in Capital: ¥18,198 million

Business Activities:
 Integrated Engineering Services
 Providing comprehensive engineering solutions, including R&D support, planning, design, procurement, construction, commissioning, and technical assistance for industrial facilities
 Areas of expertise include: Oil and gas, Petrochemicals and chemicals, Water treatment, Power generation, Advanced production systems, Pharmaceuticals and fine chemicals, Biotechnology, Environmental solutions, Resource development, Artificial intelligence, and more

Board of Directors and Auditors

Chairman
Haruo Nagamatsu

President & CEO
Eiji Hosoi*1

Executive Vice President
Noriyoshi Torigoe (CCO)*1

Directors
 Yasutaka Suzuki (CSO)
 Yasuo Miyokawa (CFO)
 Masami Tashiro*2
 Reiji Yamamoto*2
 Tatsuya Terazawa*2
 Sayoko Miyairi*2

Audit & Supervisory Board Members
 Toshihiko Nemura
 Hiroshi Yoshida
 Hideki Matsuo*3
 Takako Miyoshi*3

Executive Officers and Fellow

Senior Executive Officers
 Eiichiro Fukuhara
 Eiji Sakata
 Yoshinari Miyazaki
 Kenichi Tominaga (CTO)
 Katsumi Hashimoto

Executive Officers
 Ryoji Nakamura
 Yukihiko Akimoto
 Ippeita Kishiguchi
 Hiroshi Isomura
 Yoshimasa Wakita
 Tetsuya Honda
 Takeshi Yamato
 Yoshihide Izumi
 Takashi Kawahara
 Taisuke Nonaka

Fellow
Hiroshi Fujita

*1 : Representative Director
 *2 : Outside Director
 *3 : Outside Auditor

CEO : Chief Executive Officer
 CSO : Chief Strategy Officer
 CTO : Chief Technology Officer

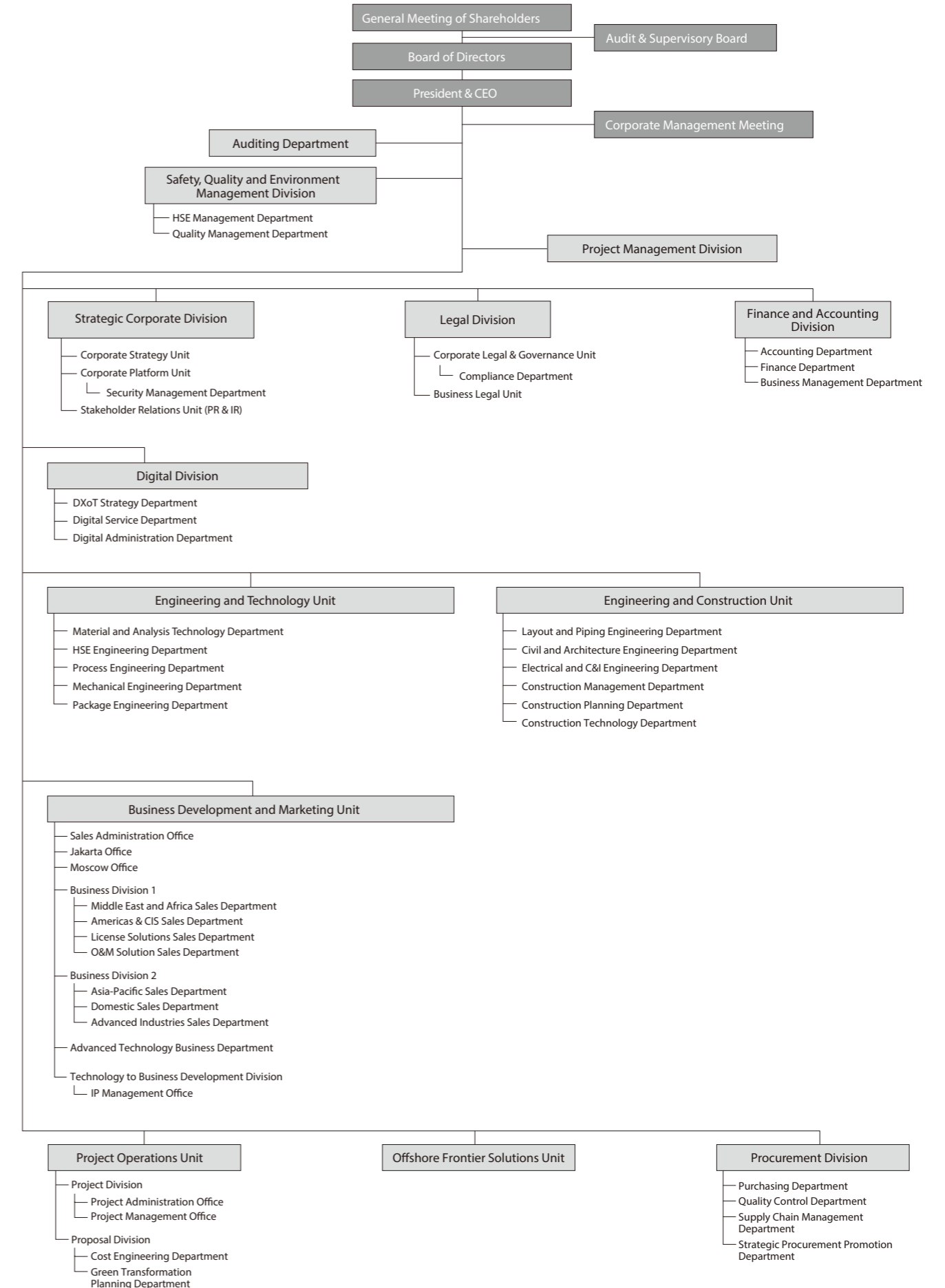
CCO : Chief Compliance Officer
 CFO : Chief Financial Officer

(As of April 1, 2026)

History

- | | | | |
|------|---|------|---|
| 1961 | - TOYO was established. Capital: 300 million yen | 1987 | - Toyo Engineering Korea Limited established. |
| 1962 | - An agreement for engineering service and technical assistance was concluded with Lummus Co. (U.S.A.). | 1989 | - Capital: 12,219 million yen |
| 1963 | - The first overseas contract for a fertilizer plant with The Fertilizer Corporation of India Ltd. was awarded. | 1993 | - Capital: 13,017 million yen |
| 1965 | - TOYO was awarded its first ethylene plant contract (Osaka, Japan). | 1994 | - TOYO received ISO 9001 registration. |
| 1972 | - International Procurement & Service Corporation (Currently Toyo Engineering Europe, S.r.l.) established. | 2004 | - TOYO received ISO 14001 registration. |
| 1975 | - Capital: 1,890 million yen | 2006 | - Toyo Engineering Corporation, China established. |
| 1976 | - Toyo Engineering India Limited established. | 2009 | - Capital: 18,199 million yen |
| 1978 | - Capital: 2,970 million yen | 2012 | - TOYO formulated the Group MVV (Mission, Vision, Values). |
| 1980 | - Capital: 3,300 million yen | 2021 | - TOYO invested in PT. Inti Karya Persada Teknik (IKPT) in Indonesia. |
| | - TOYO was listed on the second section of the Tokyo Stock Exchange. | 2022 | - TS Participações e Investimentos S.A. established. |
| 1982 | - Capital: 5,040 million yen | 2022 | - New medium-term management plan (starting from FY2021 to 25) |
| | - TOYO was listed on the first section of the Tokyo Stock Exchange. | 2022 | - Move TSE Prime Market |
| 1986 | - Toyo U.S.A., Inc. established. | 2023 | - Offshore Frontier Solutions Pte. Ltd., Singapore established. |
| | - Toyo Engineering & Construction Sdn. Bhd. established in Malaysia. | 2023 | - Eiji Hosoi was elected as President and CEO. |
| | | 2024 | - Head office relocated to Makuhari Technical Center (Chiba-shi) |

Organization



(As of April 1, 2026)