

Worldwide Network

● HEAD OFFICE / ENGINEERING CENTER

Makuhari Technical Center, 1-1 Nakase, Mihama-ku, Chiba-shi, Chiba 261-8601, Japan
Tel: 81-43-274-1000
URL <https://www.toyo-eng.com/jp/>

● TOKYO OFFICE

HIBIYA FORT TOWER, 16th Floor 1-1, Nishi Shimbashi 1-chome Minato-ku, Tokyo 105-0003, Japan
Tel: 81-3-3508-0111

Overseas Offices

● Jakarta

Wisma IKPT, 2nd Fl., JL. MT. Haryono Kav. 4-5, Jakarta 12830, Indonesia
Tel: 62-21-835-4170 Fax: 62-21-835-4149

● Moscow

Room No. 207, Entrance 7, World Trade Center, Krasnopresnenskaya Nab., 12, Moscow 123610, Russia
Tel: 7-495-258-2064/1504

Overseas Group Companies

■ Toyo Engineering Korea Limited

Toyo B/D. 11, Teheran-ro 37-gil, (Yeoksam-dong), Gangnam-gu, Seoul, 06142, Korea
Tel: 82-2-2189-1620 Fax: 82-2-2189-1890
URL <https://www.toyo-eng.com/kr/>
EPC for plants and facilities

■ Toyo Engineering Corporation (China)

7F, New Bund Oriental Plaza I, No.512 Haiyang West Road, Pudong New District, Shanghai, 200124, China
Tel: 86-21-6187-1270 Fax: 86-21-5888-8864/8874
URL <https://www.toyo-eng.com/cn/>
EPC for plants and facilities

■ PT. Inti Karya Persada Teknik (IKPT)

JL. MT. Haryono Kav. 4-5, Jakarta 12830, Indonesia
Tel: 62-21-829-2177
Fax: 62-21-828-1444/62-21-835-3091
URL <http://www.ikpt.com/>
EPC for plants and facilities

■ Toyo Engineering & Construction Sdn. Bhd.

Suite 25.4, 25th Fl., Menara Haw Par, Jalan Sultan Ismail, 50250 Kuala Lumpur, Malaysia
Tel: 60-3-2731-1100 Fax: 60-3-2731-1110
URL <https://www.toyo-eng.com/my/>
EPC for plants and facilities

■ Toyo Engineering India Private Limited

"Toyo Technology Centre", 71, Kanjur Village Road, Kanjurmarg (East), Mumbai-400 042, India
Tel: 91-22-2573-5000 Fax: 91-22-2573-5842
URL <https://www.toyo-eng.com/in/>
EPC for plants and facilities

■ Toyo Engineering Europe, S.r.l.

10 Via Alzata, 24030 Villa d'Adda, Bergamo, Italy
Tel: 39-035-4390520
Procurement services in Europe

■ Toyo U.S.A., Inc.

15415 Katy Freeway, Suite 101, Houston, Texas 77094, U.S.A.
Tel: 1-281-579-8900 Fax: 1-281-599-9337
EPC for plants and facilities

■ TS Participações e Investimentos S.A.

Edifício Birman 12, Rua Alexandre Dumas, nº 1.711, 1º andar, 04717-911, Chácara Santo Antônio, São Paulo-SP, Brazil
Tel: 55-11-5525-4990 Fax: 55-11-5525-4841
URL <https://www.toyosetal.com/>
EPC for plants and facilities, and offshore modules fabrication & integration

■ Offshore Frontier Solutions Pte. Ltd.

9 North Buona Vista Drive, #21-01 The Metropolis Tower 1, Singapore 138588
Tel: 65-6496-4000 Fax: 65-6496-4191
Engineering, Procurement, Construction and Installation for FPSO

■ TOYO MODEC OFS India Private Limited

Godrej Centre Indiranagar 7th Floor, PID No. 85-79-1-15, Ward No. 79, Municipal No. 1-15, BM Kaval, Old Madras Road, Bangalore, Karataka-560038, India
Global Capability Center to execute FEED, Detailed Engineering and to provide Procurement Support for the Topsides of FPSO projects.

Domestic Group Companies

■ TEC Project Services Corporation

Makuhari Technical Center, 1-1 Nakase, Mihama-ku, Chiba-shi, Chiba 261-8602, Japan
Tel: 81-43-272-5508
URL <https://tec-tps.com/>
EPC and maintenance services for plants and facilities, environmental technology

■ TEC Business Services Corporation

Makuhari Technical Center, 1-1 Nakase, Mihama-ku, Chiba-shi, Chiba 261-8603, Japan
Tel: 81-43-331-2290 Fax: 81-43-272-6155
URL <https://www.tbiz.co.jp/english/>
Staffing service, contracted business service, translation and interpretation service, facility management service

■ TEC Air Service Corporation

2-6-7 Ginza, Chuo-ku, Tokyo 104-0061, Japan
Tel: 81-3-3564-0130 Fax: 81-3-3564-0203
URL <https://www.tec-air.co.jp/>
Travel and insurance services

■ TEC Accounting & Consulting Ltd.

Makuhari Technical Center, 1-1 Nakase, Mihama-ku, Chiba-shi, Chiba 261-8603, Japan
Tel: 81-50-1735-3759 fax: 81-43-272-7555
URL <https://www.ta-c.co.jp/english/>
Business support and consulting for accounting and accountingsystem development

■ Chiba Data Center Corporation

6-5-3 Tendai, Inage-ku, Chiba-shi, Chiba 263-0016, Japan
Tel: 81-43-284-3611 Fax: 81-43-284-3533
URL <https://www.chiba-data.co.jp/>
Data entry, scanning services and commercial printing
*EPC : Engineering, Procurement and Construction
*FPSO: Floating Production, Storage and Offloading system



TOYO ENGINEERING CORPORATION INFORMATION



(As of December 2, 2024)

©Toyo Engineering Corp.

Printed in Japan



Corporate Data



Eiji Hosoi
President and CEO

Corporate Name: Toyo Engineering Corporation (TOYO)

Founded: May 1, 1961

Number of Employees: 7,283
(Consolidated, including the equity method affiliates, As of March 31, 2024)

Paid-in Capital: ¥18,198 million

Business Activities:

Engineering and Construction for Industrial Facilities

R&D support, design, engineering, procurement, construction, commissioning, technical assistance for industrial facilities: oil, gas, oil & gas development, petrochemicals, chemicals, water treatment, transportation systems, power generation, nuclear power, advanced production systems, pharmaceutical, fine chemical, distribution systems, biotechnology, environment and others

Board of Directors and Auditors

Chairman

Haruo Nagamatsu

President & CEO

Eiji Hosoi*1

Executive Vice President

Noriyoshi Torigoe (CCO)*1
Masayuki Yoshizawa

Director/Senior Executive Officer

Kensuke Waki (CFO)

Directors

Masami Tashiro*2
Reiji Yamamoto*2
Tatsuya Terazawa*2
Sayoko Miyairi*2

Audit & Supervisory Board Members

Toshihiko Nemura
Hiroshi Yoshida
Hideki Matsuo*3
Takako Miyoshi*3

Executive Officers

Senior Executive Officers

Shoji Koshikawa
Hiroshi Fujita (CTO)
Casey Matsumuro
Eiichiro Fukuhara
Yasutaka Suzuki
Keiji Morino
Masahiro Fujino
Yasuo Miyokawa
Yoshinari Miyazaki

Executive Officers

Eiji Sakata
Masato Otsuki
Katsumi Hashimoto
Naoyuki Sawada
Ryoji Nakamura
Kenichi Tominaga
Yukihiro Akimoto
Ippeita Kishiguchi
Hiroshi Isomura
Yoshimasa Wakita

*1: Representative Director
*2: Outside Director
*3: Outside Auditor

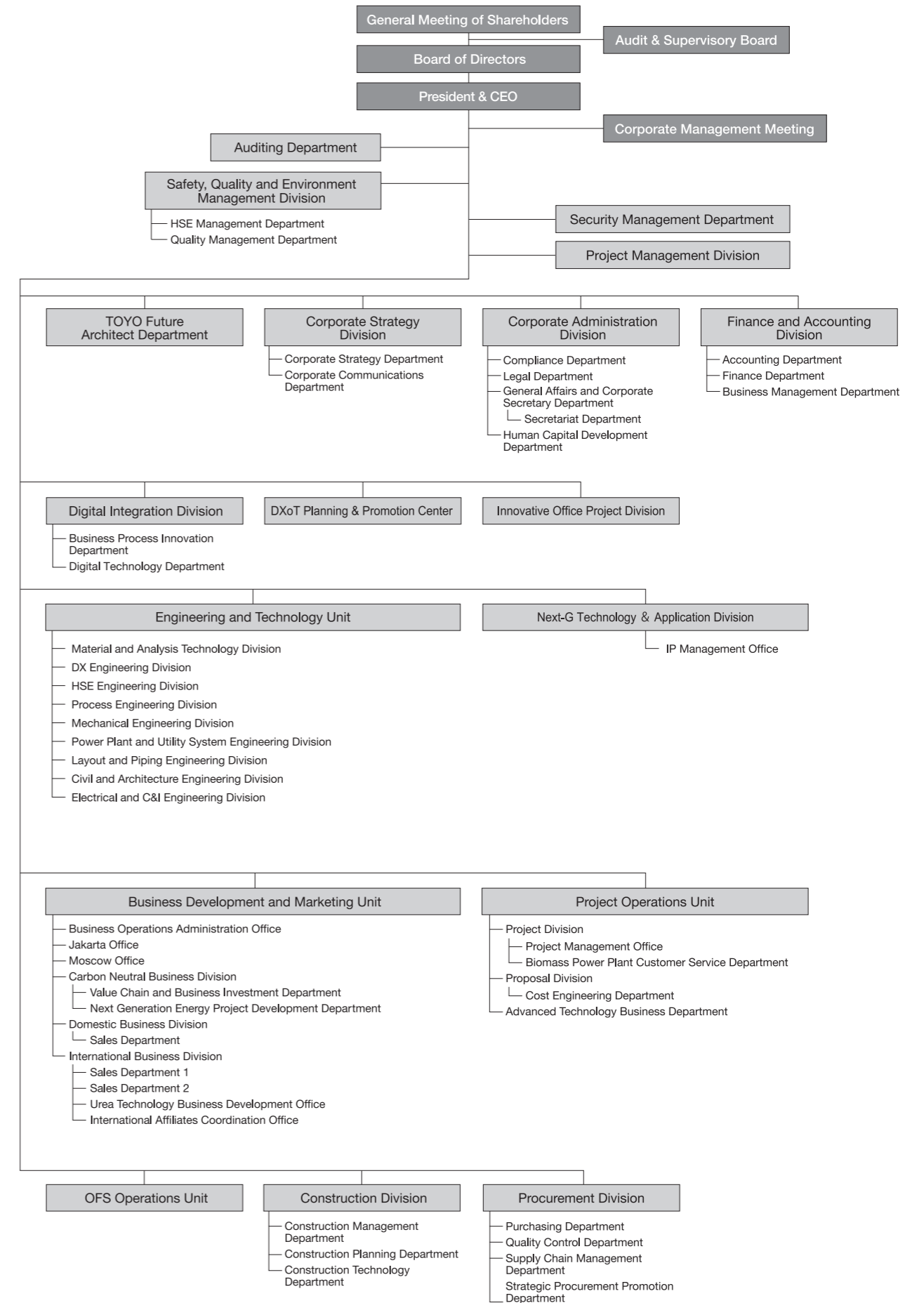
CCO : Chief Compliance Officer
CFO : Chief Financial Officer
CTO : Chief Technology Officer

(As of August 1, 2024)

History

- | | |
|--|---|
| <p>1961 •TOYO was established. Capital: 300 million yen</p> <p>1962 •An agreement for engineering service and technical assistance was concluded with Lummus Co. (U.S.A.).</p> <p>1963 •The first overseas contract for a fertilizer plant with The Fertilizer Corporation of India Ltd. was awarded.</p> <p>1965 •TOYO was awarded its first ethylene plant contract (Osaka, Japan).</p> <p>1972 •International Procurement & Service Corporation (Currently Toyo Engineering Europe, S.r.l.) established.</p> <p>1975 •Capital: 1,890 million yen</p> <p>1976 •Toyo Engineering India Limited established.</p> <p>1978 •Capital: 2,970 million yen</p> <p>1980 •Capital: 3,300 million yen
•TOYO was listed on the second section of the Tokyo Stock Exchange.</p> <p>1982 •Capital: 5,040 million yen
•TOYO was listed on the first section of the Tokyo Stock Exchange.</p> <p>1986 •Toyo U.S.A., Inc. established.
•Toyo Engineering & Construction Sdn. Bhd. established in Malaysia.</p> | <p>1987 •Toyo Engineering Korea Limited established.</p> <p>1989 •Capital: 12,219 million yen</p> <p>1993 •Capital: 13,017 million yen</p> <p>1994 •TOYO received ISO 9001 registration.</p> <p>2004 •TOYO received ISO 14001 registration.
•Toyo Engineering Corporation, China established.</p> <p>2006 •Capital: 18,199 million yen</p> <p>2009 •TOYO formulated the Group MVV (Mission, Vision, Values).</p> <p>2012 •TOYO invested in PT. Inti Karya Persada Teknik (IKPT) in Indonesia.
•TS Participações e Investimentos S.A. established.</p> <p>2021 •New medium-term management plan (starting from FY2021 to 25)</p> <p>2022 •Move TSE Prime Market
•Offshore Frontier Solutions Pte. Ltd., Singapore established.</p> <p>2023 •Eiji Hosoi was elected as President and CEO.</p> <p>2024 •Head office relocated to Makuhari Technical Center (Chiba-shi)</p> |
|--|---|

Organization



HSE: Health, Safety and Environment
OFS: Offshore Frontier Solutions

(As of January 1, 2025)